

Maths Challenge - Entries by Friday 3.00pm

Week 1 - Question

Tony has a number of tokens to use at the fair.

He gives a third of them to Nada.

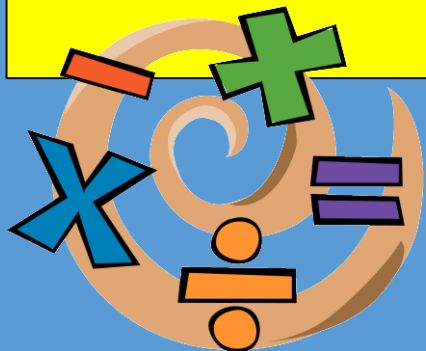
She uses 4 of them and then has 3 left.

How many tokens did Tony have at the start?

Key words (Fractions)

A *fifth* is 1 out of 5.

This means sharing an amount into five equal parts.



Maths Joke!

Q: Why did the obtuse angle go to the beach?

A: Because it was over 90 degrees

